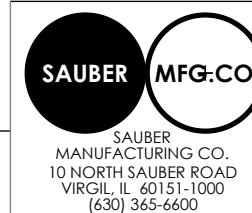


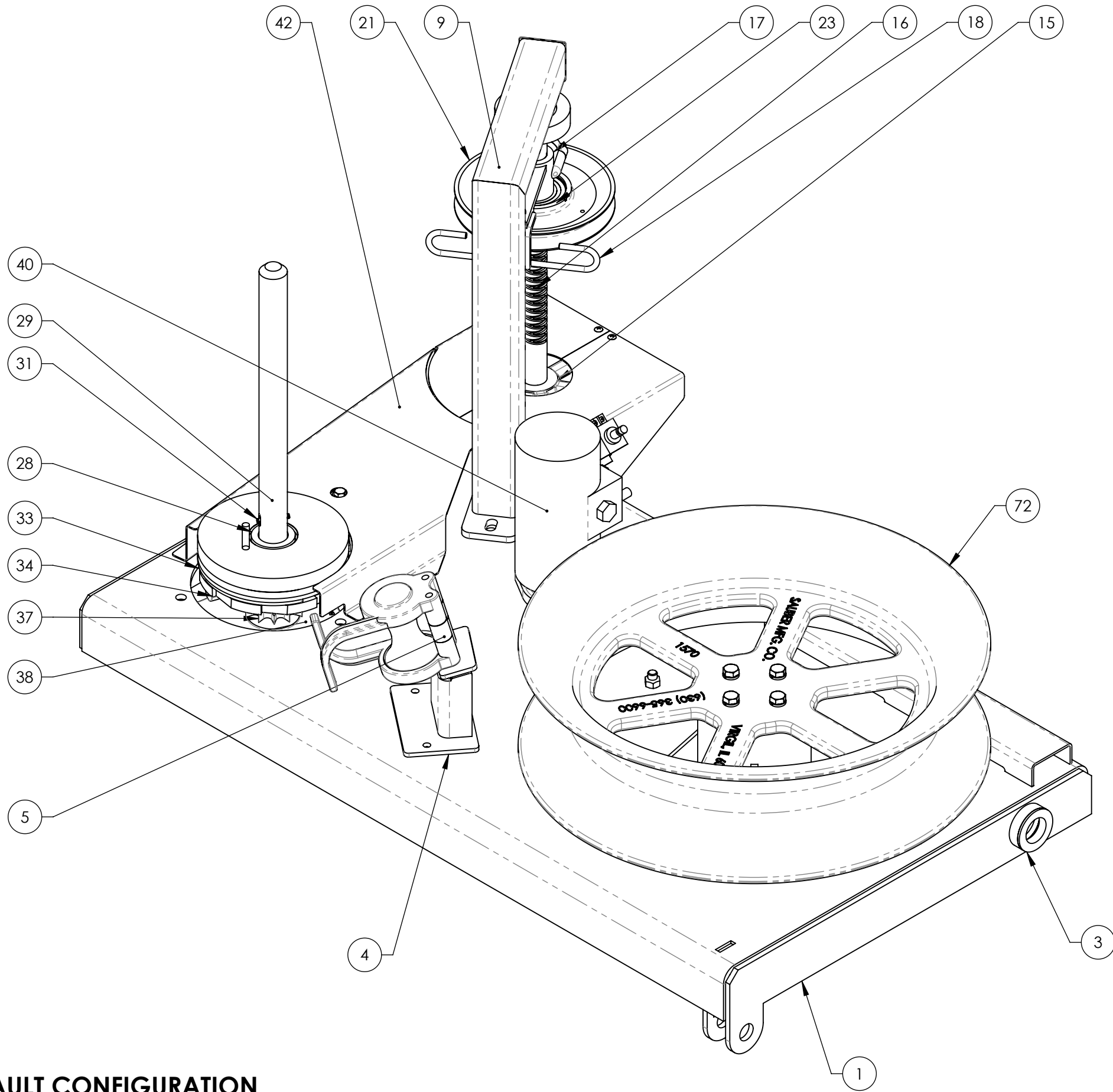
ITEM NO.	PART NUMBER	DESCRIPTION	Default	11.4" Puller Capstan Casting + Bayonet Base Shank	11.4" Puller Capstan Casting
1	S4304-S2322	1570 Table Weldment Assembly	1	1	1
2	S1768	1570 CAPSTAN BEARING HOUSING BOLT ON	1	1	1
3	11260	Oillite Bushing Flanged 1.5"IDx2"ODx.5"L-WF	2	2	2
4	S4304-11132	1570 PULLER ROPE ROLLER GUIDE BRACKET	1	1	1
5	13233	1570 ROPE ROLLER GUIDE ASSEMBLY	1	1	1
6	17924	60-Tooth Capstan Sprocket Machined for 1570	1	1	1
7	17903	1570 Sprocket Spacer	1	1	1
8	11432	Turntable Capstan Bearing	2	2	2
9	S2531	1570 Levelwind Upper Bearing Support	1	1	1
10	S2537	1570 CAPSTAN STEM	1	1	1
11	13259	1570 V-BELT TENSIONER PULLY BRACKET ASSEMBLY	1	1	1
12	13255	1570 Levelwind Housing	1	1	1
13	13159	1570 Levelwind Housing Bearing-1658DC	2	2	2
14	13256	1570 Levelwind Retaining Cap	1	1	1
15	11472	V-Belt Pulley Machined	1	1	1
16	13158	1570 LEVELWIND ROD	1	1	1
17	15584	1570 LEVELWIND FOLLOW PARTS & ASSEMBLY	1	1	1
18	13254	1570 LEVELWIND ROPE GUIDE - KANBAN	1	1	1
19	11006	1/2-13 X 1 1/2 Hex HD GR8 YZ	1	1	1
20	10590	Flat Washer 1/2 - Thick - 18-8	1	1	1
21	12276	LW4 PULLEY CASTING 1570 PULLER, AS MACHINED	1	1	1
22	10588	Split Lock Washer 1/2 - 18-8	5	5	5
23	12277	Ball Bearing w/ Dual Seals, 45mm ID x 85mm OD x 23mm W	1	1	1
24	13248	1570 ANTI-REVERSE ASSEMBLY KIT	1	1	1
25	18846	Chain Adjustment Clevis Assembly - 1570	1	1	1
26	13246	Bronze Washer - W1	2	2	2
27	13247	Compression Spring - OCS-112G-1	1	1	1
28	11437	Oil Seal - C33RJ29680	1	1	1
29	16015	1570 Puller Cassette Shaft - Stainless	1	1	1
30	13245	1570 THREADED STUD AND SHAFT	1	1	1
31	92373A379	1/4" x 1 3/4" SST Drive Lock Pin	1	1	1
32	11438	Shaff Bearing, ball, double sealed 2.625" OD x 1.50" ID x 0.563" W	1	1	1
33	11460-ASY	1861ST BRONZE PULLEY WITH SS ROD ASSEMBLY	1	1	1
34	11461	1570 Ratchet Wheel Assembly	1	1	1
35	12442	1570 Overdrive Brake Pad	1	1	1
36	10291	10-24 x 3/4 Phil Truss HD 18-8	3	3	3
37	14612	1570 15T Sprocket Assembly	1	1	1
38	11470	1570 Mounting Bracket As Machined	1	1	1
39	15109	1570 PULLER TRAILER SHIM, 1-1/2 ID 2-1/8 OD x .047	1	1	1

ITEM NO.	PART NUMBER	DESCRIPTION	Default	11.4" Puller Capstan Casting + Bayonet Base Shank	11.4" Puller Capstan Casting
40	10392	2-Speed Hydraulic Motor w/ Solenoid	1	1	1
41	11435	12-Tooth Motor Sprocket	1	1	1
42	S4014	19947 3-Piece Belt Guard Assembly - Stainless	1	1	1
43	19343	1/2-13 X 1-3/4 Hex HD Grade 8	4	4	4
44	21316	Stainless Steel Cleat for Up to 7/16" Rope	1	1	1
45	12626	1/4-20 X 1 Phil Flat HD 18-8	4	4	4
46	11131	Anti-Reversing Solenoid Woodward PN 1502-12C6U1B2S1	1	1	1
47	17434	1570 Solenoid Interface Pin	1	1	1
48	S3014-1	19296 - 1570 Anti-Reverse Chain Attachment - KANBAN	1	1	1
49	13236	Solenoid Pivot Machined Casting - (ref 11434 & CL1)	1	1	1
50	10484	1/4-20 X 3/4 Hex HD 18-8	2	2	2
51	10532	Flat Washer 1/4 - 18-8	2	2	2
52	10592	3/8-16 X 3 Hex HD 18-8 Full Thread	1	1	1
53	10757	3/8-16 Nut 18-8	1	1	1
54	13234	1570 Solenoid Top Bracket	1	1	1
55	13235	Solenoid Bottom Bracket - KANBAN	1	1	1
56	13237	1570 Solenoid Brake Top Bracket	1	1	1
57	13238	Solenoid Brake Washer 1570 Puller	2	2	2
58	13239	Solenoid Brake Bottom Bracket	1	1	1
59	15012	1/2 SAE High Strength Flat Washer	4	4	4
60	11003	1/2-13 Top Lock Nut Gr C	2	2	2
61	18840	1570 Solenoid Spring	2	2	2
62	11049	1/2-13 X 3 Hex HD GR8 YZ	2	2	2
63	10536	Flat Washer 5/16 - 18-8	2	2	2
64	10042	5/16-18 Nylon Insert Lock Nut - 18-8	2	2	2
65	13240	Solenoid Brake Pad 1570 Puller	2	2	2
66	10485	1/4-20 X 1 Hex HD 18-8	1	1	1
67	10654	1/4-20 Hex Nut 18-8	1	1	1
68	17946	MACHINE SCREW HEX NUT 1/4"-28	1	1	1
69	21871	Solenoid Anti-Reverse Pull Roller Chain Assy	1	1	1
70	15036	11.4" 5000# Puller Capstan Casting	-	-	1
71	S4211ASY	15036 11.4" Capstan w/ Bayonet Shank	-	1	-
72	15785	1570 PULLING CAPSTAN 20" AS-MACHINED	1	-	-

Information on this print is of proprietary nature and is not to be copied. This design is the property of Sauber Mfg. Co.



SAUBER MFG. CO. VIRGIL, IL	
TITLE 1570 Table Sub-Assembly	
IDENT NO. S2333	REV R08
SCALE: 1:12	DRAWN: NGH
DATE: 5/24/2021	SHEET 1 OF 4

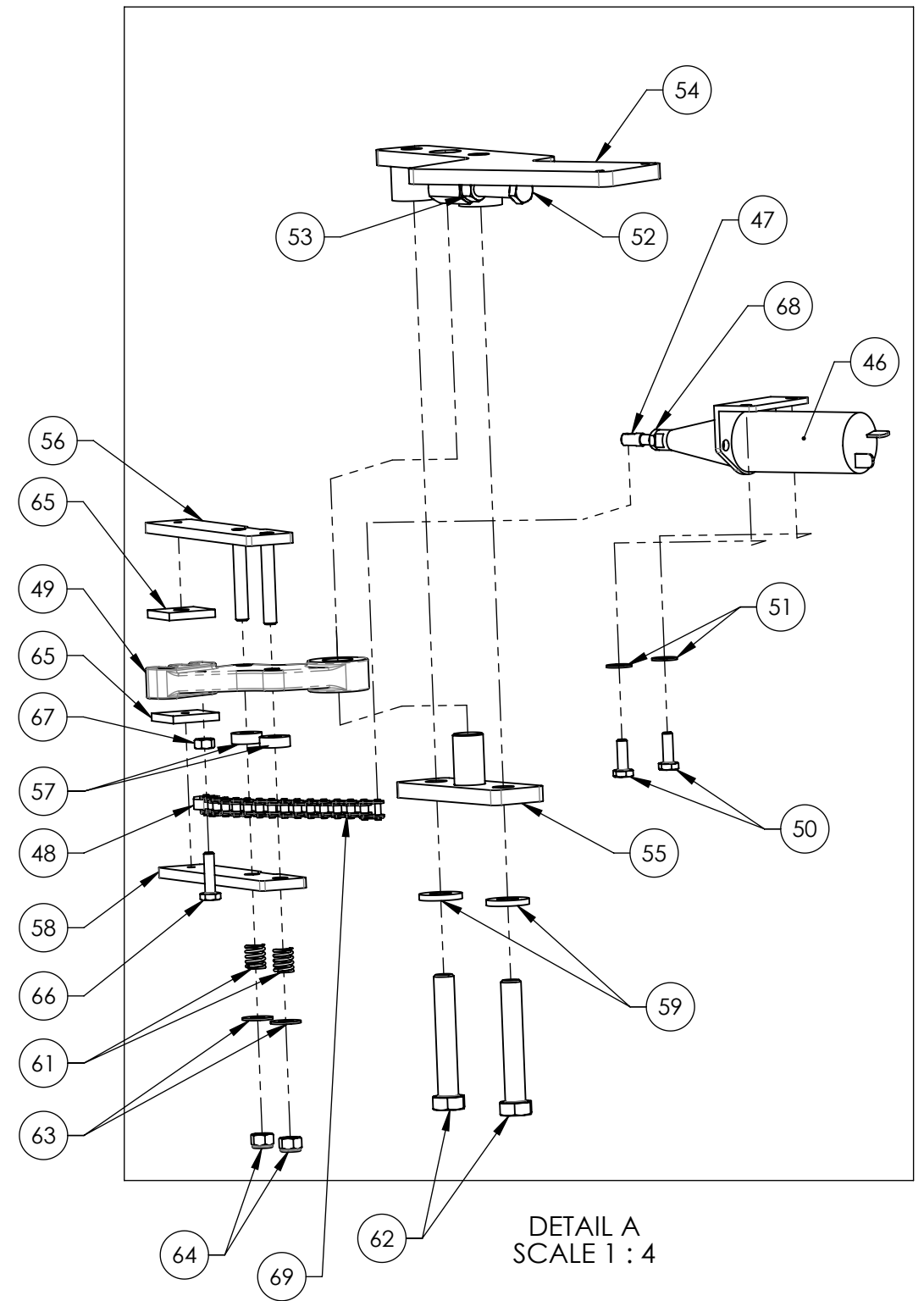
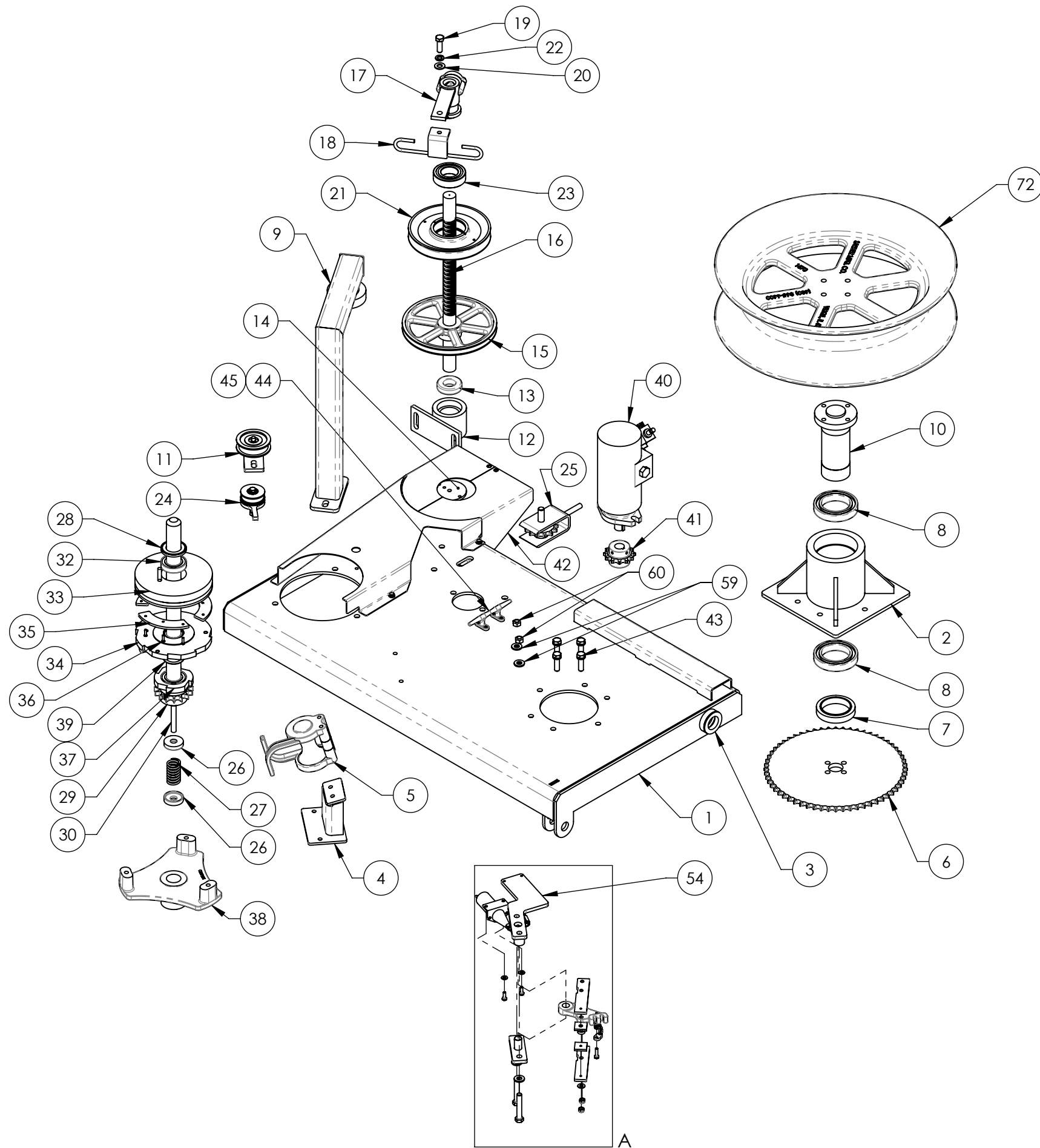


**DEFAULT CONFIGURATION**  
20" 15785 CAPSTAN

Information on this print is of proprietary nature and is not to be copied. This design is the property of Sauber Mfg. Co.



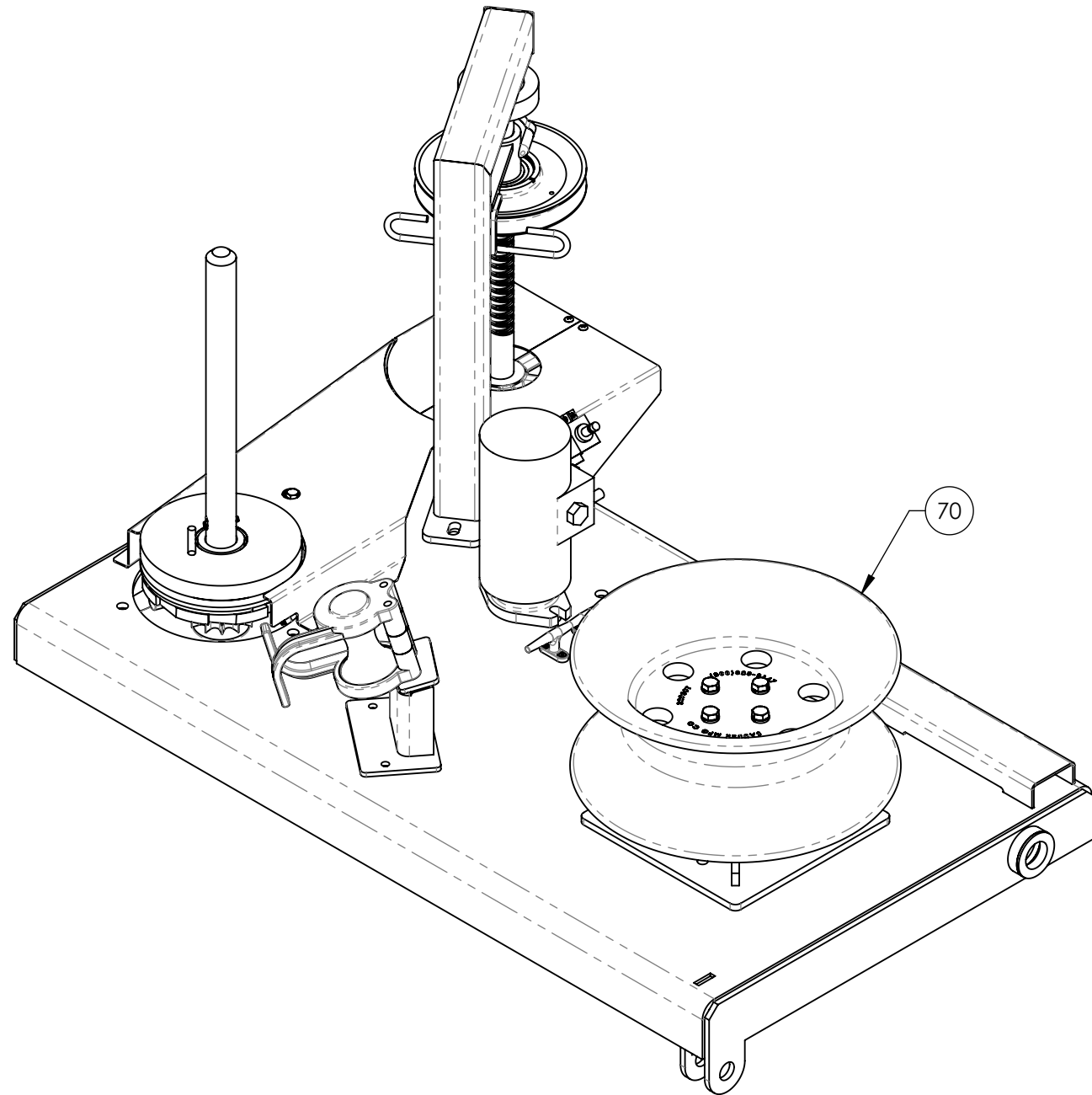
SAUBER MFG. CO. VIRGIL, IL	
TITLE 1570 Table Sub-Assembly	
IDENT. NO. S2333	REV. R08
SCALE: 1:12	DRAWN: NGH
DATE: 5/24/2021	SHEET 2 OF 4



	SAUBER MFG. CO. VIRGIL, IL	
	TITLE 1570 Table Sub-Assembly	
SAUBER MANUFACTURING CO. 10 NORTH SAUBER ROAD VIRGIL, IL 60151-1000 (630) 365-6600	IDENT. NO. <b>S2333</b>	REV. <b>R08</b>
Information on this print is of proprietary nature and is not to be copied. This design is the property of Sauber Mfg. Co.	SCALE: 1:12 DRAWN: NGH DATE: 5/24/2021	SHEET 3 OF 4

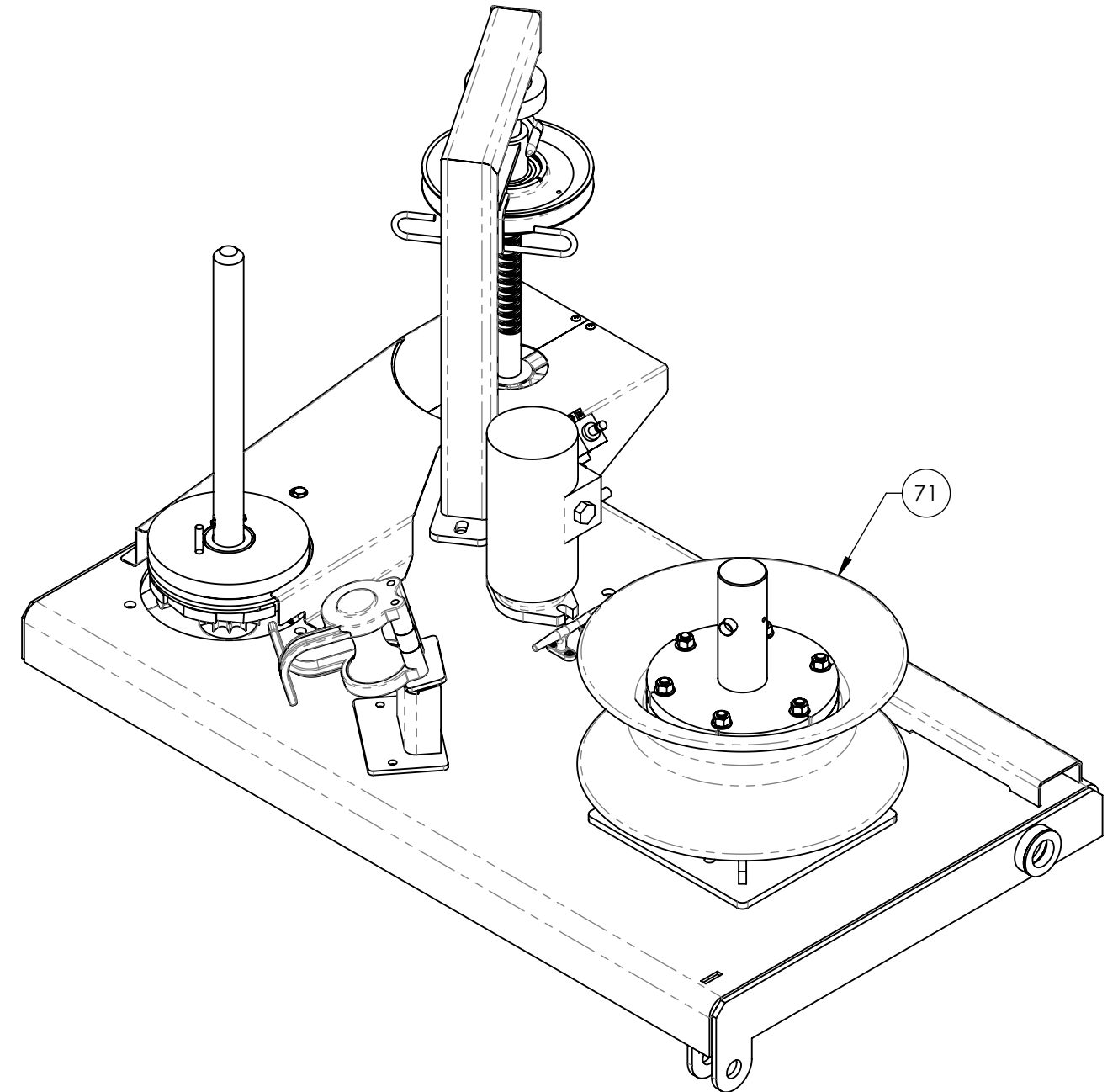
**CONFIGURATION NOTES:**

- S2333-15036:  
11.4" PULLER CAPSTAN CASTING:**  
REPLACE ITEM 15785 WITH  
(1) 15036 11.4" CAPSTAN



**CONFIGURATION NOTES:**

- S2333-S4209:  
11.4" PULLER CAPSTAN W/ BAYONET BASE SHANK**  
REPLACE ITEM 15785 WITH  
(1) S4211ASY 11.4" CAPSTAN W/BAYONET SHANK



SEE WORK ORDER FOR CONFIGURATION SPEC'S

Information on this print is of proprietary nature and is not to be copied. This design is the property of Sauber Mfg. Co.

**SAUBER MFG.CO.**  
SAUBER  
MANUFACTURING CO.  
10 NORTH SAUBER ROAD  
VIRGIL, IL 60151-1000  
(630) 365-6600

SAUBER MFG. CO. VIRGIL, IL	
TITLE 1570 Table Assembly W/ 11.4" Capstan & Bayonet Shank	
IDENT. NO. S2333	REV. R08
SCALE: 1:12	DRAWN: NGH   DATE: 5/24/2021   SHEET 4 OF 4